

Owner's Manual

QUIKSHADE[®] SUMMIT

Please review the following instructions and make yourself familiar with the parts and function of your Quik Shade[®] canopy.

Parts included:

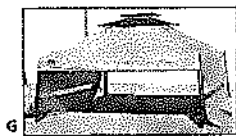
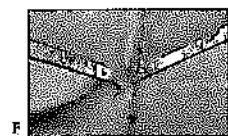
- [1] assembled canopy frame
(“L” Awning arm extensions; 4-double awning, 2-single awning)
- [1] fabric canopy top with awning
(Awning rod assemblies; 2-double half wall awning units)
- [1] storage bag
- [4] stakes

Set-Up --Step 1: Before opening the canopy, remove the sleeve covering the vents. Canopy will not open if this is not removed. Place your QUIK SHADE in the center of the set-up area. With a partner on the opposite side of the frame, hold onto the two outer legs and lift slightly for clearance. Take a few steps back until you extend the frame to a full arm's length- approx. 4 feet (Fig. A).

Step 2: Open the canopy to about 80% and place the top fabric on the frame. Make sure the long portions are on the two sides where the awning arms are located and that the vent fabric is on top of this piece (Fig. B).

Step 3: Attach the hook and loop straps around the legs at each corner to secure the top (Fig. C).

Step 4: Open the canopy the rest of the way by pressing on the top and bottom of the diamond on the eave (Fig. D). Be sure your partner is across from you diagonally.



Step 5: Lock the Quik latch slider in place by holding the top of the leg and pushing up on the slider (Fig. E).

Step 6: Open vents to the desired size to provide additional air flow (Fig. F). Your opened canopy should resemble (Fig. G).

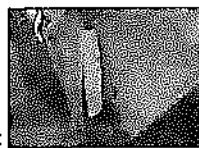
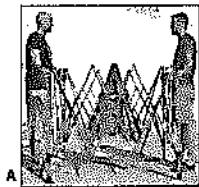
Step 7: Pull the inner leg out to extend the height of the canopy to the first level (Fig. H). The Quik latch will click into place. Extend the canopy to its desired height by pressing on the Quik latch and lifting the canopy until the latch clicks into place. Use the provided stakes to secure the canopy. Note: for the awning to work properly, the canopy needs to be at its highest position.

Step 8: Extend the awnings arms upward until they click into place at around 45 degrees (Fig. I).

Step 9: Form a straight assembly by attaching the corded awning rods. Insert the rod assembly through the sleeve at the end of the awning fabric (Fig. J).

Step 10: Snap the awnings wall in place by attaching the straight assembly to the awning extension arm (Fig. K).

Step 11: For units with a full wall, make another straight assembly. Insert this assembly into the sleeve at the bottom of the wall. Then, attach the provided awning extension to the awning arm by sliding it over the end (Fig. L). As before, attach the straight assembly to the arm extender (Fig. K).

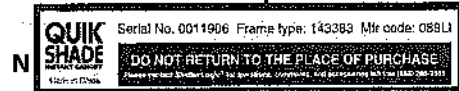


Step 12: When the wall is closed, there is a dedicated snap tab that goes around the canopy leg to keep it snug with the frame (Fig. M).

Step 13: You can manipulate the awning five different ways by moving the arms until the lock into place. Make sure the other arm is at the same setting.

Step 14: Fill out the included warranty form. Product information can be found on the red sticker on the eaves of the frame (Fig. N). Staple a copy of your receipt to the warranty form and store in a safe place.

Example



Go to shelterlogic.com/support/forms/product-registration/ and register your new canopy. If you have any issues setting up your canopy, have questions, need parts or accessories call our toll free service line (888) 288-2345.

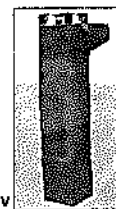
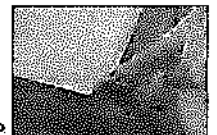
Take Down --Step 1: Remove stakes from the ground. Position the awning to its lowest setting and unbutton the fastening snaps (Fig. O).

Step 2: Disengage the awning rods from the arms by carefully pulling the rod out (Fig. P).

Step 3: Pull out the awning rod from the fabric (Fig. Q). Disassemble the awning rods in a similar way.

Step 4: Reduce each leg to its lowest position by pushing or pulling the Quik-latch (Fig. R).

Step 5: At each corner of the canopy, push or pull the Quik latch. When all four corners are disengaged, the canopy should close slightly. Be careful not to pinch your hands by keeping your hands away from the bottom part of the slider- it may move fast once released. If the slider is hard to unlock, relieve the ceiling assembly by lifting the tubes attached to the canopy upwards (Fig. S). You can also relieve tension by undoing the hook and loop straps at each corner (Fig. T).



Step 6: Hold the top of the center frame section and lift slightly. Walk towards your partner as the frame folds in and continue walking until the frame is about halfway closed. Be sure to avoid pinching your hands or fingers.

Step 7: Hold the outside of the legs and continue closing the canopy as you walk towards your partner. The completely folded canopy should stand on its own (Fig. U).

Step 8: With the canopy standing, unzip the wheeled bag and slide the bag down until the entire canopy is in. Gently invert the canopy and zipper the bag shut (Fig. V).

Note: The canopy top may remain in place for easier subsequent set-up. However, to prolong the life of the fabric, we recommend that you remove the top when storing your canopy.